

TECNOVOTOOLS, S.L.
SUMINISTROS DE MECANIZADO 



KINTEK
READY, ALWAYS.

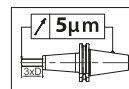
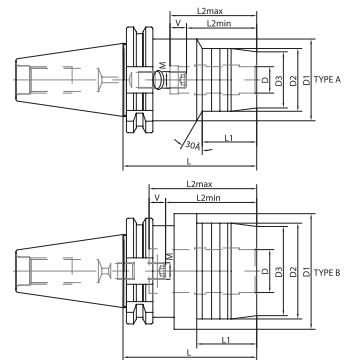
PROMOCIONES
2025



GAIT

Mandrini idraulici per utensili attacco cilindrico

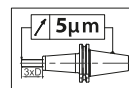
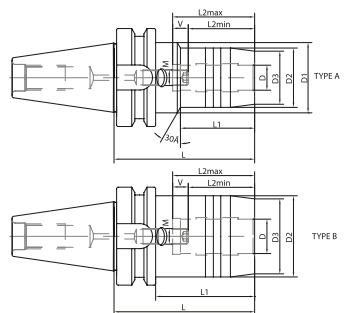
Hydro chucks for cylindrical shank tools



DIN69871AD

	CODE N.	PRICE	DESCRIPTION	ISO	D	D1	D2	D3	L	L1	L2 min	L2 max	V	M	TYPE	G2,5 25000
SK 40	252-11305	232,00	TC40-HC6-80,5	40	6	50	28	25	80,5	44	27,5	37,5	10	M5x0,8	A	•
	252-11307	232,00	TC40-HC8-80,5	40	8	50	30	27	80,5	44	27,5	37,5	10	M6x1	A	•
	252-11309	228,00	TC40-HC10-80,5	40	10	50	32	29	80,5	44	32,5	42,5	10	M6x1	A	•
	252-11311	228,00	TC40-HC12-80,5	40	12	50	34	31	80,5	44	37,5	47,5	10	M6x1	A	•
	252-11327	228,00	TC40-HC14-80,5	40	14	50	36	33	80,5	44	37,5	47,5	10	M6x1	A	•
	252-11313	228,00	TC40-HC16-80,5	40	16	50	38	35	80,5	48	42,5	52,5	10	M8x1	A	•
	252-11328	228,00	TC40-HC18-80,5	40	18	50	41	38	80,5	30	42,5	52,5	10	M8x1	A	•
	* 252-11325	184,00	TC40-G20CS-64,5	40	20	-	49,5	40	64,5	45,5	42,5	52,5	10	M8x1	A	•
	252-11315	228,00	TC40-HC20-80,5	40	20	50	43	40	80,5	48	42,5	52,5	10	M8x1	A	•
	252-11317	228,00	TC40-HC25-80,5	40	25	66	57	53	80,5	26	51	61	10	M16x1	B	•
252-11318	228,00	TC40-HC32-80,5	40	32	80	63	60	80,5	26	55	65	10	M16x1	B	•	

*COMPACT VERSION



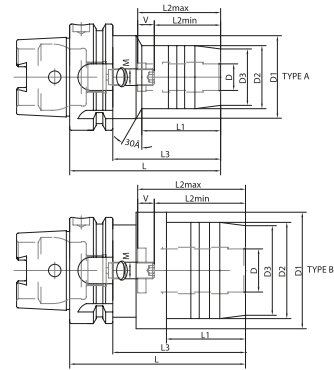
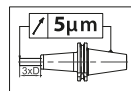
MAS403/BT AD

	CODE N.	PRICE	DESCRIPTION	ISO	D	D1	D2	D3	L	L1	L2 min	L2 max	V	M	TYPE	G2,5 25000
BT 40	252-11422	232,00	BT40-HC6-90	40	6	50	28	25	90	44	27,5	37,5	10	M5x0,8	A	•
	252-11423	232,00	BT40-HC8-90	40	8	50	30	27	90	39	27,5	37,5	10	M6x1	A	•
	252-11424	228,00	BT40-HC10-90	40	10	50	32	29	90	44	32,5	42,5	10	M6x1	A	•
	252-11425	228,00	BT40-HC12-90	40	12	50	34	31	90	44	37,5	47,5	10	M6x1	A	•
	252-11426	228,00	BT40-HC14-90	40	14	50	36	33	90	44	37,5	47,5	10	M6x1	A	•
	252-11427	228,00	BT40-HC16-90	40	16	50	38	35	90	48	42,5	52,5	10	M8x1	A	•
	252-11428	228,00	BT40-HC18-90	40	18	50	41	38	90	48	42,5	52,5	10	M8x1	A	•
	* 252-11443	184,00	BT40-G20CS-72,5	40	20	-	49,5	40	72,5	45,5	42,5	52,5	10	M8x1	B	•
	252-11429	228,00	BT40-HC20-90	40	20	50	43	40	90	48	42,5	52,5	10	M8x1	A	•
	252-11483	228,00	BT40-HC25-100	40	25	-	57	53	100	73	51	61	10	M16x1	B	•
252-11485	228,00	BT40-HC32-105	40	32	-	63	58	105	-	55	65	10	M16x1	B	•	

*COMPACT VERSION

Mandrini idraulici per utensili attacco cilindrico

Hydro chucks for cylindrical shank tools



DIN69893 A

	CODE N.	PRICE	DESCRIPTION	HSK	D	D1	D2	D3	L	L1	L3	L2 min	L2 max	V	M	TYPE	G2,5 25000
HSK 63	252-11737	300,00	HSK63A-HC6-70	63	6	50	28	25	70	24	44	27,5	37,5	10	M5x0,8	A	•
	252-11738	300,00	HSK63A-HC8-70	63	8	50	30	27	70	24	44	27,5	37,5	10	M6x1	A	•
	252-11739	272,00	HSK63A-HC10-80	63	10	50	32	29	80	35	54	32,5	42,5	10	M6x1	A	•
	252-11740	272,00	HSK63A-HC12-85	63	12	50	34	31	85	40	59	37,5	47,5	10	M6x1	A	•
	252-11741	272,00	HSK63A-HC14-85	63	14	50	36	33	85	40	59	37,5	47,5	10	M6x1	A	•
	252-11742	272,00	HSK63A-HC16-90	63	16	50	38	35	90	46	64	42,5	52,5	10	M8x1	A	•
	* 252-11744	272,00	HSK63A-HC20-90	63	20	50	43	40	90	48	64,5	42,5	52,5	10	M8x1	A	•
	252-11746	272,00	HSK63A-HC32-125	63	32	75	63	58	125	63	99	55	65	10	M16x1	B	•

*COMPACT VERSION



KIT EVO HYDRO GRIP

Kit idraulico con un'alta coppia di serraggio
Hydraulic chucks with high tightening torque

new

COMPONENTI VALIGETTA:

1 mandrino idraulico **EVO HYDRO GRIP**
+ 1 serie pinze + 1 chiave

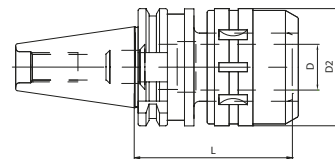
KIT BOX:

1 hydraulic chuck **EVO HYDRO GRIP**
+ 1 collets set + 1 wrench

CODE N.	COMPOSITION		PRICE
KITTC40G12EHG	TC40 H50 G12 + 5 PINZE GX12: Ø3,4,5,6,8	Bussole standard	430,00
KITTC40G20EHG	TC40 H64,5 G20 + 5 PINZE GX20: Ø6,8,10,12,16	Bussole standard	430,00
KITBT30G12EHG	BT30 H69 G12 + 5 PINZE GX12: Ø3,4,5,6,8	Bussole standard	410,00
KITBT30G20EHG	BT30 H90 G20 + 5 PINZE GX20: Ø6,8,10,12,16	Bussole standard	410,00
KITBT40G12EHG	BT40 H58 G12 + 5 PINZE GX12: Ø3,4,5,6,8	Bussole standard	430,00
KITBT40G20EHG	BT40 H72,5 G20 + 5 PINZE GX20: Ø6,8,10,12,16	Bussole standard	430,00
KITHSK63A12EHG	HSK63A-HC12-80 + 5 PINZE GX12: Ø3,4,5,6,8	Bussole standard	430,00
KITHSK63AG20EHG	HSK63A-HC20-80 + 5 PINZE GX20: Ø6,8,10,12,16	Bussole standard	430,00
KITTC40OG12EHG	TC40 H50 G12 + 5 PINZE OGX12: Ø3,4,5,6,8	Bussole a tenuta stagna	520,00
KITTC40OG20EHG	TC40 H64,5 G20 + 5 PINZE OGX20: Ø6,8,10,12,16	Bussole a tenuta stagna	520,00
KITBT30OG12EHG	BT30 H60 G12 + 5 PINZE OGX12: Ø3,4,5,6,8	Bussole a tenuta stagna	499,00
KITBT30OG20EHG	BT30 H90 G20 + 5 PINZE OGX20: Ø6,8,10,12,16	Bussole a tenuta stagna	499,00
KITBT40OG12EHG	BT40 H58 G12 + 5 PINZE OGX12: Ø3,4,5,6,8	Bussole a tenuta stagna	520,00
KITBT40OG20EHG	BT40 H72,5 G20 + 5 PINZE OGX20: Ø6,8,10,12,16	Bussole a tenuta stagna	520,00
KITHSK63AOG12EHG	HSK63A-HC12-80 + 5 PINZE OGX12: Ø3,4,5,6,8	Bussole a tenuta stagna	580,00
KITHSK63AOG20EHG	HSK63A-HC20-80 + 5 PINZE OGX20: Ø6,8,10,12,16	Bussole a tenuta stagna	580,00

Mandrini a forte serraggio

Milling chuck



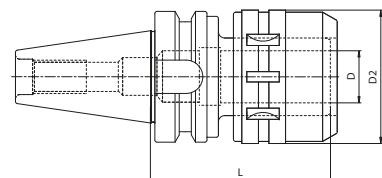
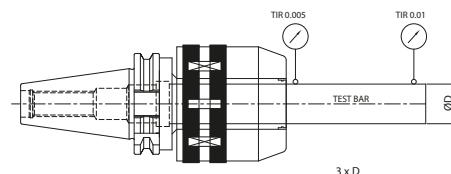
DIN 69871AD

CODE N.	PRICE	DESCRIPTION	ISO	D	D2	L	G6,3 12000RPM
214-01308	136,00	TC40H90C20	40	20	54	90	•
214-01301	136,00	TC40H105C20	40	20	54	105	•
214-01302	148,00	TC40H105C32	40	32	72	105	•
214-01304	160,00	TC50H105C20	50	20	54	105	•
214-01305	175,00	TC50H105C32	50	32	72	105	•
214-01306	203,00	TC50H135C32	50	32	72	135	•

FORNITI CON CHIAVE INCLUSA

- SUPPLIED WITH WRENCH

MILLING CHUCK (diameter)	SPECIFICATION (DIN)	TOLERANCE (Taper shank)	RUN-OUT (3xD)	CLAMPING TORQUE
C20	AT3	TC40(0-+0,003)	0-0,01	980M.m (100 Kgf.m)
C32		TC50(0-+0,004)		3430M.m (350 Kgf.m)



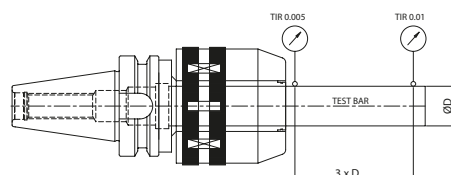
JIS-B 6339 MAS 403/BT AD

CODE N.	PRICE	DESCRIPTION	ISO	D	D2	L	G6,3 12000RPM
214-01508	136,00	BT40H80C20	40	20	54	80	•
214-01501	136,00	BT40H105C20	40	20	54	105	•
214-01502	148,00	BT40H105C32	40	32	72	105	•
214-01504	148,00	BT50H105C20	50	20	54	105	•
214-01505	176,00	BT50H105C32	50	32	72	105	•
214-01506	203,00	BT50H135C32	50	32	72	135	•

FORNITI CON CHIAVE INCLUSA

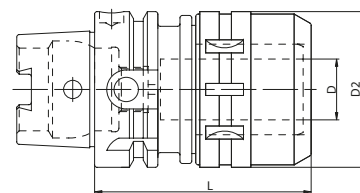
- SUPPLIED WITH WRENCH

MILLING CHUCK (diameter)	SPECIFICATION (DIN)	TOLERANCE (Taper shank)	RUN-OUT (3xD)	CLAMPING TORQUE
C20	AT3	TC40(0-+0,003)	0-0,01	980M.m (100 Kgf.m)
C32		TC50(0-+0,004)		3430M.m (350 Kgf.m)



Mandrini a forte serraggio

Milling chuck

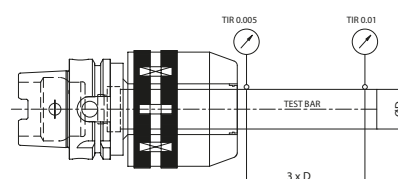


DIN 69893 A+C

HSK	CODE N.	PRICE	DESCRIPTION	D	D2	L	G6,3 12000
63	214-01701	300,00	HSK63AH105C20	20	54	105	•
63	214-01702	300,00	HSK63AH130C32	32	72	130	•

FORNITI CON CHIAVE INCASSATA **DELIVERED WITH WRENCH**

MILLING CHUCK (diameter)	SPECIFICATION (DIN)	RUN-OUT (3xD)	CLAMPING TORQUE
C20	DIN 69893 A	0-0,01	980M.m (100 Kgf.m)
C32	HSK40A		3430M.m (350 Kgf.m)
-	HSK50A		-
-	HSK63A		-
-	HSK100A		-



Kit forte serraggio

Milling chuck kit

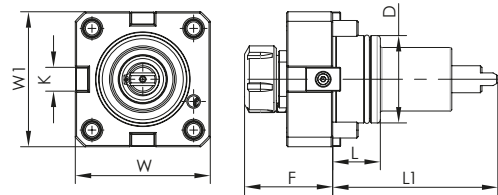


COMPONENTI VALIGETTA:
1mandrinoforte serraggio
+ 1serie pinze + 1chiave

KIT BOX:
1milling chuck
+ 1collets set + 1wrench

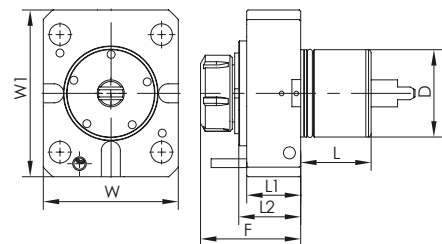
	CODICE ORDINAZIONE ORDER CODE	PRICE	COMPOSIZIONE COMPOSITION
ISO 40	KITTC40C20	188,00	N°1TC 40 L90 C20 + n°5 pinze K20: Ø6,8,10,12,16
	KITTC40C32	234,00	N°1TC 40 L105 C32 + n°7pinze K32: Ø6,8,10,12,16,20,25
ISO 40	KITTC50C20	214,00	N°1TC 50 L105 C20 + n°5pinze K20: Ø6,8,10,12,16
	KITTC50C32	260,00	N°1TC 50 L105 C32 + n°7pinze K32: Ø6,8,10,12,16,20,25
ISO 40	KITBT40C20	188,00	N°1BT40 L80 C20 + n°5 pinze K20: Ø6,8,10,12,16
	KITBT40C32	234,00	N°1BT40 L80 C32 + n°7 pinze K32: Ø6,8,10,12,16,20,25
ISO 40	KITBT50C20	214,00	N°1BT 50L105 C20 + n°5 pinze K20: Ø6,8,10,12,16
	KITBT50C32	275,00	N°1BT 50L105 C32 + n°7pinze K32: Ø6,8,10,12,16,20,25
HSK	KITHSK63AC20	338,00	N° HSK63AH105C20 + n°5 pinze K20: Ø6,8,10,12,16+chiave
	KITHSK63AC32	370,00	N° HSK63AH120C32 + n°7 pinze K32: Ø6,8,10,12,16,20,25+chiave

Portautensile motorizzato assiale Axial drilling and milling head



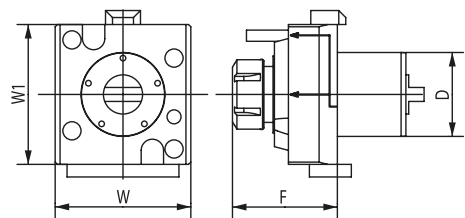
BMT

CODE N.	PRICE	BMT	ER	D	F	K	L	L1	W	W1	MAX: SPEED (Rpm)	i	MAX: TORQUE Nm	INTERNAL COOLING
124-04502	915,00	45	ER25	45	67,6	15	40	84	78,5	75	6000	1:1	50	yes
124-05501	850,00	55	ER25	55	71	15	30	104	85	85	6000	1:1	50	no
124-06509	940,00	55	ER25	55	71	15	30	104	85	85	6000	1:1	50	yes
124-06501	1.020,00	65	ER32	65	75	18	32	112	94	94	6000	1:1	70	no
124-06508	1.100,00	65	ER32	65	75	18	32	112	94	94	6000	1:1	70	yes



MORI SEIKI NL2000

CODE N.	PRICE	ER	D	F	L	L1	L2	W	W1	TORQUE (Nm)	Nmax (rpm)	i	INTERNAL COOLING	P (bar)
124-06003	1.345,00	ER32	60	89	53	48,5	58	108	130	70	6000	1:1	yes	20

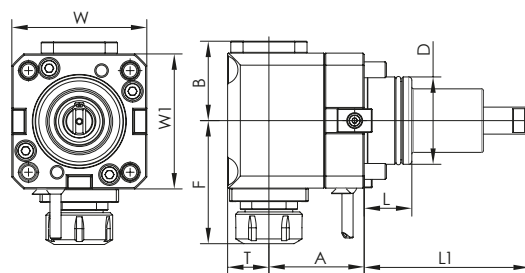


MORI SEIKI NL2000

CODN.	PRICE	D	ER	INTERNAL COOLING	F	W	W1	TORQUE (Nm)	Nmax (rpm)	RATIO	P (bar)
124-06005	1.360,00	60	ER32	no	87	97	100	70	6000	1:1	-
124-06006	1.525,00	60	ER32	yes	87	97	100	70	6000	1:1	20

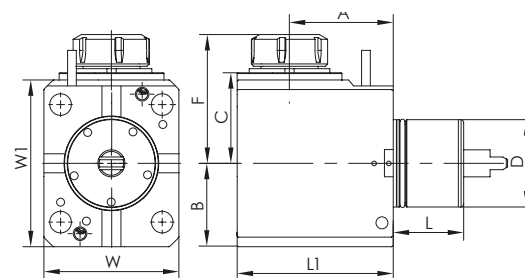
Portautensile motorizzato radiale

Radial drilling and milling head



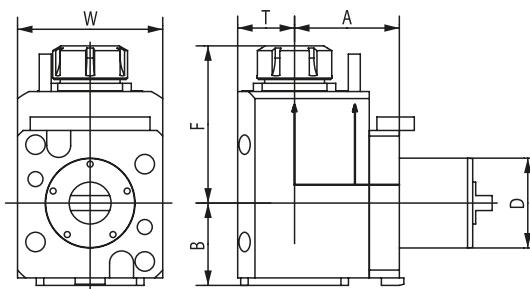
BMT

CODE N.	PRICE	BMT	ER	D	A	B	FL	L1	T	W	W1	MAX: SPEED (Rpm)	I	MAX: TORQUE Nm	INTERNAL COOLING	P (bar)	
124-04504	1.575,00	45	ER25	45	65	57	97,6	40	84	36,5	75	83	6000	1:1	50	yes	20
124-05502	1.625,00	55	ER25	55	70	57	98	30	104	36,5	85	98	6000	1:1	50	no	-
124-06510	1.715,00	55	ER25	55	70	57	98	30	104	36,5	85	98	6000	1:1	50	yes	20
124-05511	1.625,00	55	ER25	55	85	57	98	30	104	36,5	85	98	6000	1:1	50	no	-
124-05512	1.715,00	55	ER25	55	85	57	98	30	104	36,5	85	98	6000	1:1	50	yes	20
124-06502	1.775,00	65	ER32	65	72	59	111	32	112	38	94	100	6000	1:1	70	no	-
124-06512	1.850,00	65	ER32	65	72	59	111	32	112	38	94	100	6000	1:1	70	yes	20
124-06513	1.950,00	65	ER32	65	100	59	111	32	112	38	94	100	6000	1:1	70	no	-
124-06514	2.025,00	65	ER32	65	100	59	111	32	112	38	94	100	6000	1:1	70	yes	20



MORI SEIKI NL2000

CODE N.	PRICE	ER	D	F	L	L1	A	B	C	W	W1	TORQUE (Nm)	Nmax (rpm)	I	INTERNAL COOLING	P (bar)
124-06004	2.000,00	ER32	60	107	53	128	90	65	78	108	130	70	6000	1:1	yes	20



MORI SEIKI NL2000

CODE N.	PRICE	D	ER	INTERNAL COOLING	DIRECTION	A	B	F	T	W	TORQUE (Nm)	Nmax (rpm)	RATIO	P (bar)
124-06007	2.050,00	60	ER32	no	right/left	70	59	111	38	94	70	6000	1:1	-
124-06008	2.175,00	60	ER32	yes	right/left	70	59	111	38	94	70	6000	1:1	20

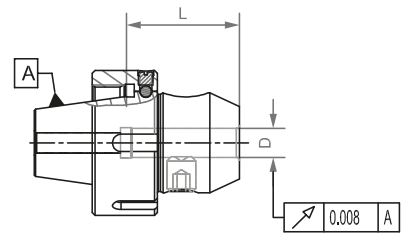
Mandrini portafrese tipo weldon

End mill holders weldon

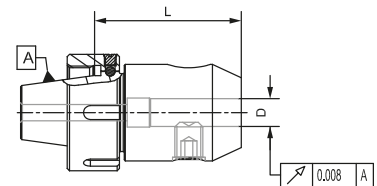
SHORT



CODE N.	DESCRIPTION	D	L	PRICE
213-16707	ER25H35WE06	6	35	160,00
213-16709	ER25H39WE10	10	39	160,00
213-16710	ER25H43WE12	12	43	160,00
213-16701	ER32H35WE06	6	35	160,00
213-16702	ER32H35WE08	8	35	160,00
213-16703	ER32H39WE10	10	39	160,00
213-16704	ER32H43WE12	12	43	160,00



CODE N.	DESCRIPTION	D	L	PRICE
213-16715	ER32H55WE06	6	55	175,00
213-16717	ER32H59WE10	10	59	175,00
213-16718	ER32H63WE12	12	63	175,00
213-16720	ER32H65WE16	16	65	175,00

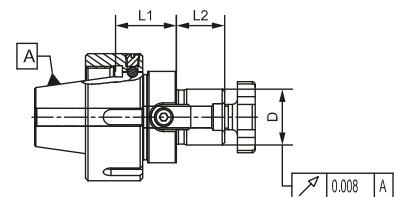


Mandrini portafrese a trascinamento fisso

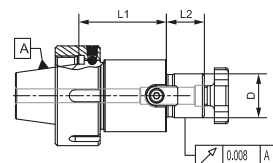
Face mill holders-tenons drive



CODE N.	DESCRIPTION	D	L1	L2	PRICE
216-76704	ER25H22D16	16	22	17	155,00
216-76705	ER25H24D22	22	24	19	155,00
216-76701	ER32H22D16	16	22	17	163,00
216-76702	ER32H24D22	22	24	19	163,00
216-76703	ER32H26D27	27	26	21	170,00



CODE N.	DESCRIPTION	D	L1	L2	PRICE
216-76708	ER32H42D16	16	42	17	170,00
216-76709	ER32H44D22	22	44	19	170,00



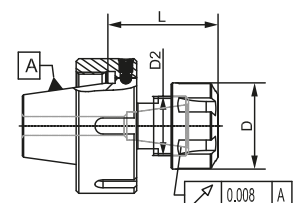
Mandrini portapinza tipo er

Er collet chuck

SHORT



CODE N.	DESCRIPTION	ER	D	D2	L	PRICE
214-36704	ER32H41ER16	16	32	22	41	165,00
214-36705	ER32H43ER20	20	35	25	43	165,00
214-36706	ER32H45ER25	25	42	32	45	165,00
214-36707	ER32H48ER32	32	50	40	48	165,00



Morsa autocentrante a 5 assi MRC48 x 78

La morsa è adatta per sistemi di bloccaggio a punto zero con interasse 52 mm. Può essere utilizzata per particolari grezzi con grip 3 mm. E superfici lisce con ganascia rettificata. Le ganasce sono reversibili e permettono di raggiungere un campo di serraggio più ampio. Disponibili accessori e ricambi.

5-axis centring

vice MRC48 x 78

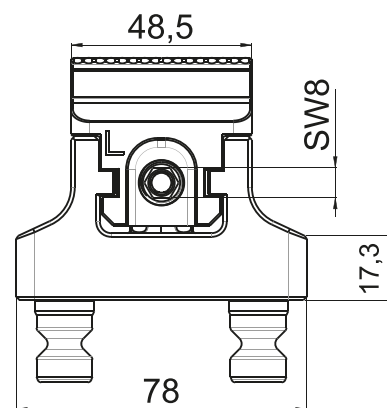
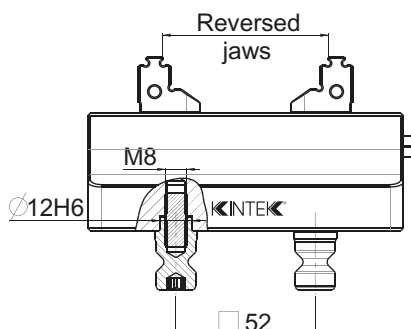
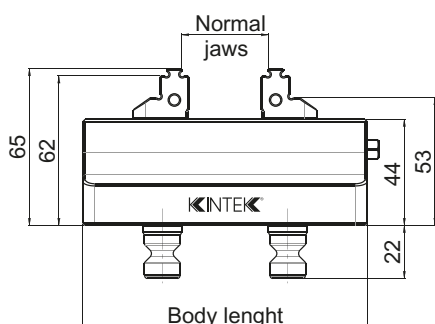
The vice is suitable for zero point clamping systems with 52 mm. Grid.

It can be used for jaw part with 3 mm. Grip and smooth surfaces with grinded jaws. Jaws are reversible and suitable to obtain wider clamping range. Accessories and spare parts are available.



new

MRC48 X 78	MRC48 X 118	MRC48 X 158	PRICE	559,00	616,00	743,00
LARGHEZZA GANASCE / JAW WIDTH			mm	48,5	mm 48,5	mm 48,5
LUNGHEZZA CORPO / BODY LENGTH			mm	78	mm 118	mm 158
GAMMA DI SERRAGGIONORMALE - GANASCIA ROVESCIAITA CLAMPING RANGE NORMAL REVERSED JAW			mm	6-40/30-60	mm 6-80/30-100	mm 6-120/30-140
SISTEMA DI SERRAGGIO A PUNTO ZERO / ZERO POINT CLAMPING SYSTEM			mm	□ 52	mm □ 52	mm □ 52
DIAMETRO DEL BULLONE A PUNTO ZERO / ZERO POINT BOLT DIAMETER			mm	∅ 16	mm ∅ 16	mm ∅ 16
COPPIA DI SERRAGGIO (MAX) / TIGHTENING TORQUE (MAX)			Nm	30	Nm 30	Nm 30
FORZA DI SERRAGGIO / CLAMPING FORCE			kN	6	kN 6	kN 6
PRECISIONI DI CENTRATURA / CENTRING ACCURACY			mm	± 0,02	mm ± 0,02	mm ± 0,02



Morsa autocentrante a 5 assi MRC78 x 110

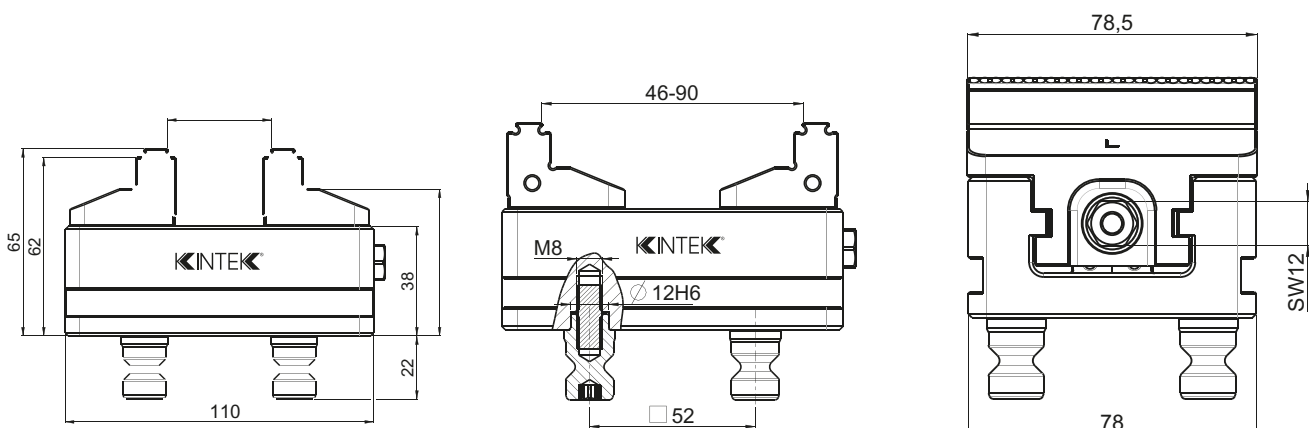
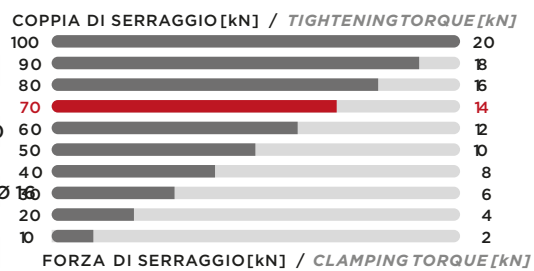
La morsa è adatta per sistemi di bloccaggio a punto zero con interasse 52 mm. Può essere utilizzata per particolari grezzi con grip 3 mm. E superfici lisce con ganasce rettificata. Le ganasce sono reversibili e permettono di raggiungere un campo di serraggio più ampio. Disponibili accessori e ricambi.

5-axis centring vice MRC78 x110

The vice is suitable for zero point clamping systems with 52 mm. Grid. It can be used for jaw part with 3 mm. Grip and smooth surfaces with grinded jaws. Jaws are reversible and suitable to obtain wider clamping range. Accessories and spare parts are available.



MRC78 X 110		PRICE	672,00
LARGHEZZA GANASCE / JAW WIDTH	mm	78,5	
LUNGHEZZA CORPO / BODY LENGTH	mm	110	
GAMMA DI SERRAGGIO / CLAMPING RANGE	mm	0-90	
SISTEMA DI SERRAGGIO A PUNTO ZERO / ZERO POINT CLAMPING SYSTEM	mm	□ 52	
DIAMETRO DEL BULLONE A PUNTO ZERO / ZERO POINT BOLT DIAMETER	mm	Ø 12	
COPPIA DI SERRAGGIO (MAX) / TIGHTENING TORQUE (MAX)	Nm	70	
FORZA DI SERRAGGIO / CLAMPING FORCE	kN	14	
PRECISIONE DI CENTRATURA / CENTRING ACCURACY	mm	± 0,02	



Morsa autocentrante a 5 assi MRC78 x 145

La morsa è adatta per sistemi di bloccaggio a punto zero con interasse 52 mm. Può essere utilizzata per particolari grezzi con grip 3 mm. E superfici lisce con ganasce rettificata. Le ganasce sono reversibili e permettono di raggiungere un campo di serraggio più ampio. Disponibili accessori e ricambi.

5-axis centring vice MRC78 x 145

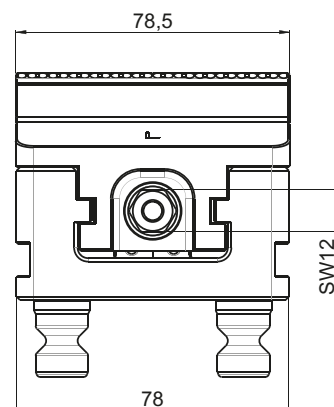
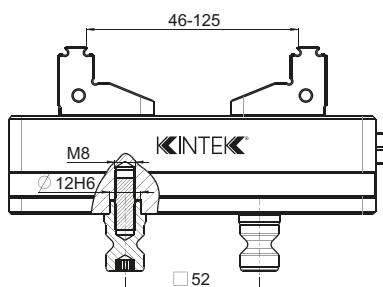
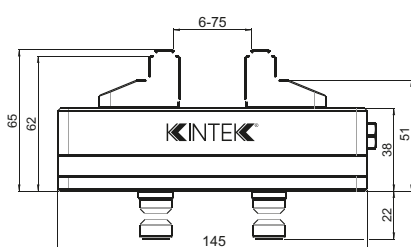
The vice is suitable for zero point clamping systems with 52 mm. Grid.

It can be used for jaw part with 3 mm. Grip and smooth surfaces with grinded jaws. Jaws are reversible and suitable to obtain wider clamping range. Accessories and spare parts are available.



MRC78 X 145	PRICE	656,00	COPPIA DI SERRAGGIO [kN] / TIGHTENING TORQUE [kN]	
LARGHEZZA GANASCE / JAW WIDTH	mm	78,5	100	20
LUNGHEZZA CORPO / BODY LENGTH	mm	145	90	18
GAMMA DI SERRAGGIO / CLAMPING RANGE	mm	0-125	80	16
SISTEMA DI SERRAGGIO A PUNTO ZERO / ZERO POINT CLAMPING SYSTEM	mm	□ 52	70	14
DIAMETRO DEL BULLONE A PUNTO ZERO / ZERO POINT BOLT DIAMETER	mm	Ø 12H6	60	12
COPPIA DI SERRAGGIO (MAX) / TIGHTENING TORQUE (MAX)	Nm	70	50	10
FORZA DI SERRAGGIO / CLAMPING FORCE	kN	14	40	8
PRECISIONE DI CENTRATURA / CENTRING ACCURACY	mm	± 0,02	30	6
			20	4
			10	2

FORZA DI SERRAGGIO [kN] / CLAMPING TORQUE [kN]



Morsa autocentrante a 5 assi MRC78 x 185

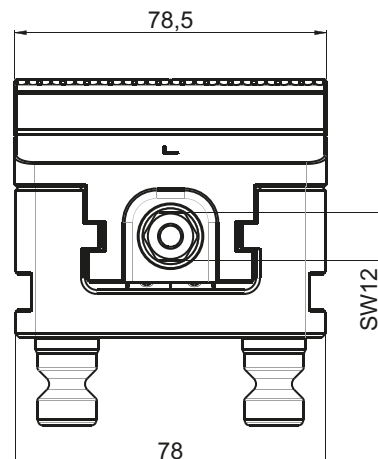
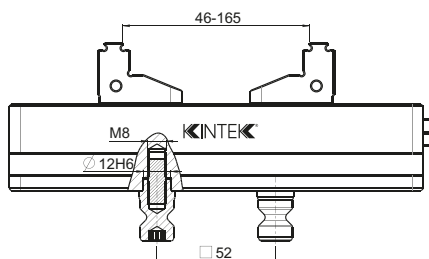
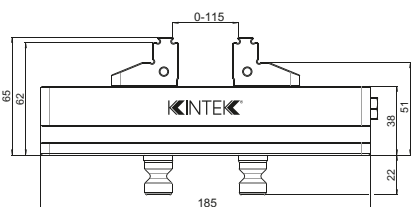
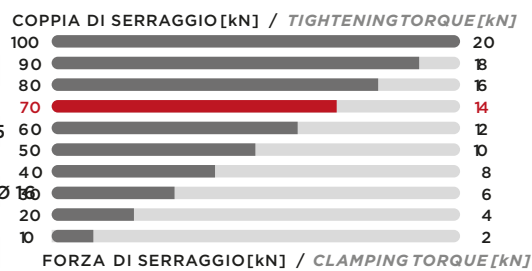
La morsa è adatta per sistemi di bloccaggio a punto zero con interasse 52 mm. Può essere utilizzata per particolari grezzi con grip 3 mm. E superfici lisce con ganasce rettificata. Le ganasce sono reversibili e permettono di raggiungere un campo di serraggio più ampio. Disponibili accessori e ricambi.

5-axis centring vice MRC78 x 185

The vice is suitable for zero point clamping systems with 52 mm. Grid. It can be used for jaw part with 3 mm. Grip and smooth surfaces with grinded jaws. Jaws are reversible and suitable to obtain wider clamping range. Accessories and spare parts are available.



MRC78 X 185		PRICE	770,00
LARGHEZZA GANASCE / JAW WIDTH	mm	78,5	
LUNGHEZZA CORPO / BODY LENGTH	mm	185	
GAMMA DI SERRAGGIO / CLAMPING RANGE	mm	0-165	
SISTEMA DI SERRAGGIO A PUNTO ZERO / ZERO POINT CLAMPING SYSTEM	mm	□ 52	
DIAMETRO DEL BULLONE A PUNTO ZERO / ZERO POINT BOLT DIAMETER	mm	Ø 12H6	
COPPIA DI SERRAGGIO (MAX) / TIGHTENING TORQUE (MAX)	Nm	70	
FORZA DI SERRAGGIO / CLAMPING FORCE	kN	14	
PRECISIONE DI CENTRATURA / CENTRING ACCURACY	mm	± 0,02	



Morsa autocentrante a 5 assi MRC126x 180

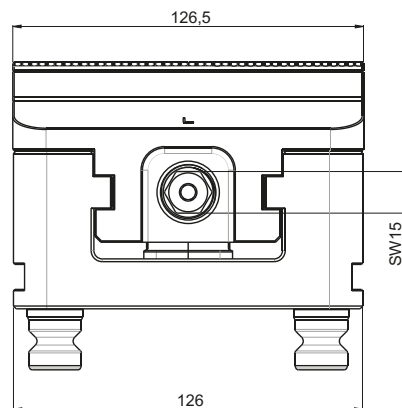
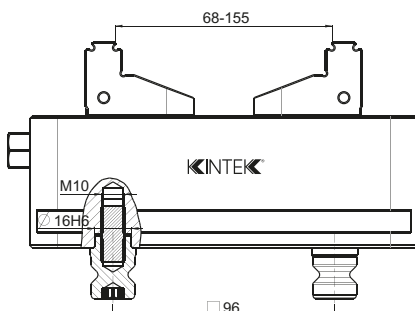
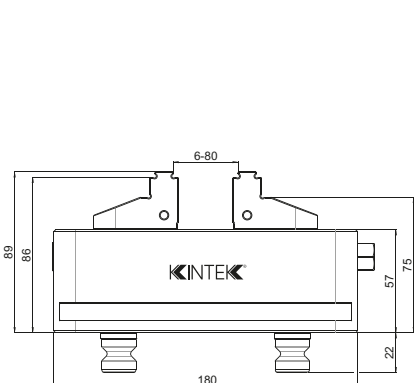
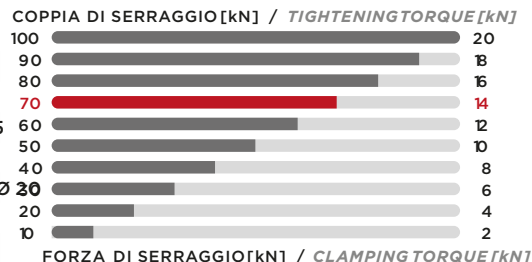
La morsa è adatta per sistemi di bloccaggio a punto zero con interasse 96 mm. Può essere utilizzata per particolari grezzi con grip 3 mm. E superfici lisce con ganasce rettificata. Le ganasce sono reversibili e permettono di raggiungere un campo di serraggio più ampio. Disponibili accessori e ricambi.

5-axis centring vice MRC126x 180

The vice is suitable for zero point clamping systems with 96 mm. Grid. It can be used for jaw part with 3 mm. Grip and smooth surfaces with grinded jaws. Jaws are reversible and suitable to obtain a wider clamping range. Accessories and spare parts are available.



MRC126 X 180		PRICE	869,00
LARGHEZZA GANASCE / JAW WIDTH	mm	126,5	
LUNGHEZZA CORPO / BODY LENGTH	mm	180	
GAMMA DI SERRAGGIO / CLAMPING RANGE	mm	0-155	
SISTEMA DI SERRAGGIO A PUNTO ZERO / ZERO POINT CLAMPING SYSTEM	mm	□ 96	
DIAMETRO DEL BULLONE A PUNTO ZERO / ZERO POINT BOLT DIAMETER	mm	Ø 20	
COPPIA DI SERRAGGIO (MAX) / TIGHTENING TORQUE (MAX)	Nm	100	
FORZA DI SERRAGGIO / CLAMPING FORCE	kN	20	
PRECISIONE DI CENTRATURA / CENTRING ACCURACY	mm	± 0,02	



Morsa autocentrante a 5 assi MRC126x 230

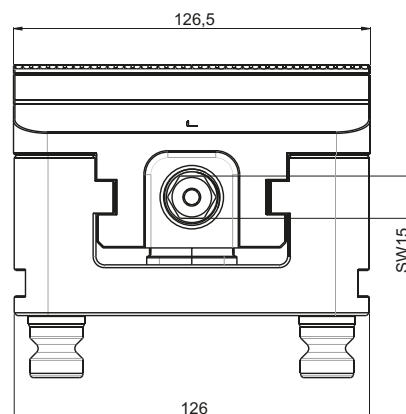
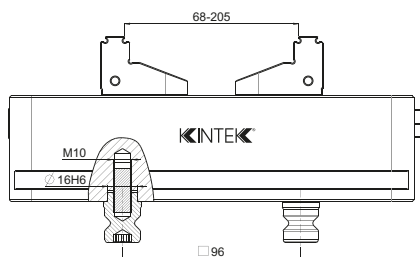
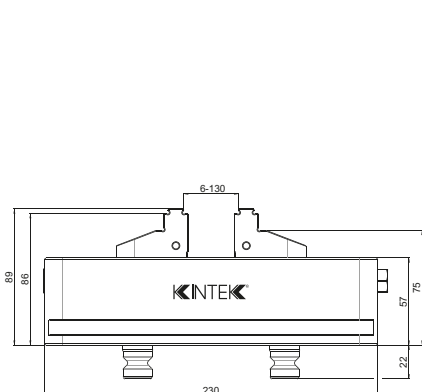
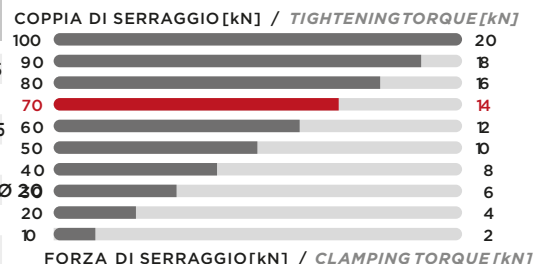
La morsa è adatta per sistemi di bloccaggio a punto zero con interasse 96 mm. Può essere utilizzata per particolari grezzi con grip 3 mm. E superfici lisce con ganasce rettificata. Le ganasce sono reversibili e permettono di raggiungere un campo di serraggio più ampio. Disponibili accessori e ricambi.

5-axis centring vice MRC126x 230

The vice is suitable for zero point clamping systems with 96 mm. Grid. It can be used for jaw part with 3 mm. Grip and smooth surfaces with grinded jaws. Jaws are reversible and suitable to obtain a wider clamping range. Accessories and spare parts are available.



MRC126 X 230		PRICE	1.027,00
LARGHEZZA GANASCE / JAW WIDTH	mm	126,5	
LUNGHEZZA CORPO / BODY LENGTH	mm	230	
GAMMA DI SERRAGGIO / CLAMPING RANGE	mm	0-205	
SISTEMA DI SERRAGGIO A PUNTO ZERO / ZERO POINT CLAMPING SYSTEM	mm	□ 96	
DIAMETRO DEL BULLONE A PUNTO ZERO / ZERO POINT BOLT DIAMETER	mm	∅ 20	
COPPIA DI SERRAGGIO (MAX) / TIGHTENING TORQUE (MAX)	Nm	100	
FORZA DI SERRAGGIO / CLAMPING FORCE	kN	20	
PRECISIONE DI CENTRATURA / CENTRING ACCURACY	mm	± 0,02	



Morsa autocentrante a 5 assi MRC126x 280

La morsa è adatta per sistemi di bloccaggio a punto zero con interasse 96 mm. Può essere utilizzata per particolari grezzi con grip 3 mm. E superfici lisce con ganasce rettificata. Le ganasce sono reversibili e permettono di raggiungere un campo di serraggio più ampio. Disponibili accessori e ricambi.

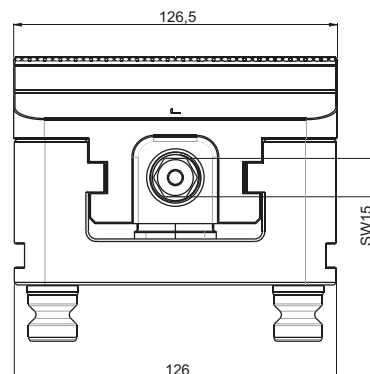
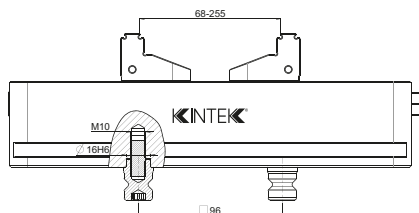
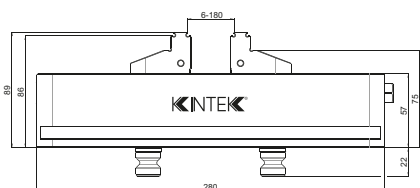
5-axis centring vice MRC126x 280

The vice is suitable for zero point clamping systems with 96 mm. Grid. It can be used for jaw part with 3 mm. Grip and smooth surfaces with grinded jaws. Jaws are reversible and suitable to obtain a wider clamping range. Accessories and spare parts are available.



MRC126 X 280	PRICE	1.304,00	COPPIA DI SERRAGGIO [kN] / TIGHTENING TORQUE [kN]
LARGHEZZA GANASCE / JAW WIDTH	mm	126,5	100 20
LUNGHEZZA CORPO / BODY LENGTH	mm	280	90 18
GAMMA DI SERRAGGIO / CLAMPING RANGE	mm	0-255	80 16
SISTEMA DI SERRAGGIO A PUNTO ZERO / ZERO POINT CLAMPING SYSTEM	mm	□ 96	70 14
DIAMETRO DEL BULLONE A PUNTO ZERO / ZERO POINT BOLT DIAMETER	mm	Ø 20	60 12
COPPIA DI SERRAGGIO (MAX) / TIGHTENING TORQUE (MAX)	Nm	100	50 10
FORZA DI SERRAGGIO / CLAMPING FORCE	kN	20	40 8
PRECISIONE DI CENTRATURA / CENTRING ACCURACY	mm	± 0,02	20 4
			10 2

FORZA DI SERRAGGIO [kN] / CLAMPING TORQUE [kN]



Punto zero ZK1- 196 x 176

Ripetibilità nel centesimo.


Fori per perni di centratura con interassi 52 e 96. Il corpo è in acciaio e nichelato in superficie.

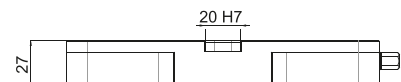
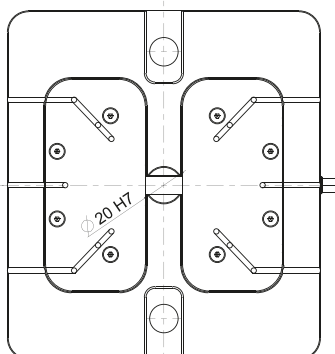
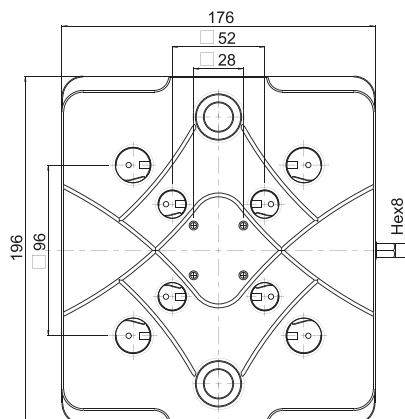
Zero point plates ZK1- 196 x 176

Repetability less than 10µm. Industry standard 52 and 96 centring pins spacing in one plate.

Surface treated steel body construction.



ZK1 - 196 X 176	PRICE	830,00	K - MKS	K - MKC
DIMENSIONI / DIMENSIONS	mm	196x176x27	KIT DI MONTAGGIO DISPONIBILI AVAILABLE MOUNTING KITS 	
SISTEMA PUNTO ZERO / ZERO POINT SYSTEM	mm □	96 / 52		
TASTO PUNTO ZERO / ZERO POINT BOLTS	mm Ø	20 / 16		
COPPIA DI SERRAGGIO MASSIMA / MAX TIGHTENING TORQUE	Nm	45		
FORZA DI MANTENIMENTO / HOLDING FORCE	kN	60		
PRECISIONE / ACCURACY	mm	0,01		
MORSA ADATTA / SUITABLEVICE	-	MRC126/MRC78/MRC48		
KIT DI MONTAGGIO ADATTO / SUITABLE MOUNTNG KIT	-	K - MKS / K - MKS		



Punto zero ZK2 - 176 x 146

Ripetibilità nel centesimo.

Fori per perni di centratura con interassi 52 e 96. Il corpo è in acciaio e nichelato in superficie.

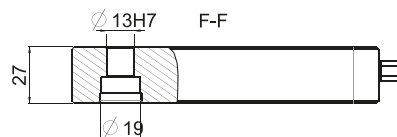
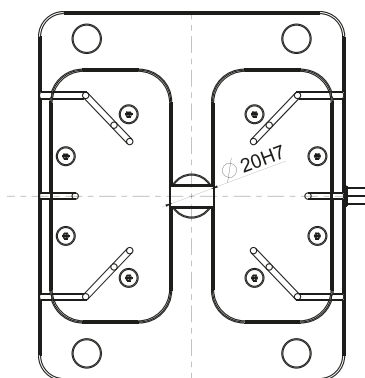
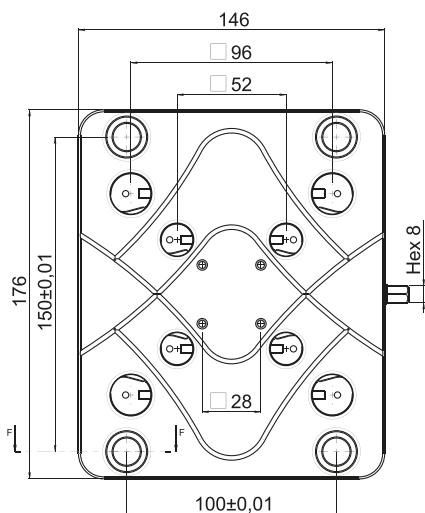
Zero point plates ZK2 - 176 x 146

Repetability less than 10µm. Industry standard 52 and 96 centring pins spacing in one plate.

Surface treated steel body c



ZK2 - 176 X 146	PRICE	711,00	K - MKB
DIMENSIONI / DIMENSIONS	mm	176x146x27	KIT DI MONTAGGIO DISPONIBILI AVAILABLE MOUNTING KITS Posizionamento di alta precisione grazie ai fori $\varnothing 13h7$ e alle boccole del kit di montaggio MKB. <i>High precision positioning due to the $\varnothing 13h7$ holes and the bushings from the MKB mounting kit.</i>
SISTEMA PUNTO ZERO / ZERO POINT SYSTEM	mm	$\square 96 / 52$	
TASTO PUNTO ZERO / ZERO POINT BOLTS	mm	$\varnothing 20 / 16$	
COPPIA DI SERRAGGIO MASSIMA / MAX TIGHTENING TORQUE	Nm	5	
FORZA DI MANTENIMENTO / HOLDING FORCE	kN	60	
PRECISIONE / ACCURACY	mm	0,01	
MORSA ADATTA / SUITABLEVICE	-	MRC126/MRC78/MRC48	
KIT DI MONTAGGIO ADATTO / SUITABLE MOUNTNG KIT-		K - MKB	



Punto zero ZK3 - 104 x 104

Ripetibilità nel centesimo.

Fori per perni di centraggio con interassi da 52 mm.

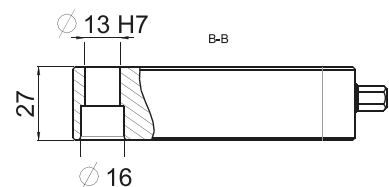
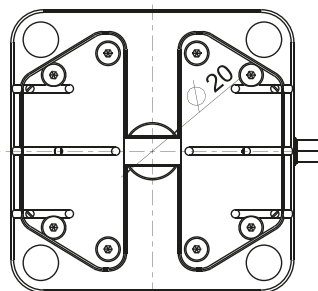
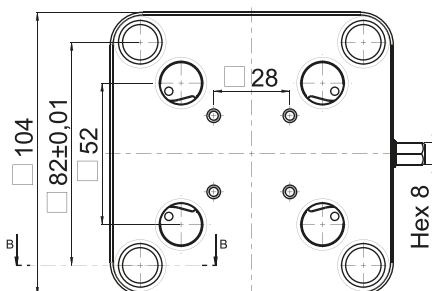
Il corpo è in acciaio e nichelato in superficie.

Zero point plates ZK3 - 104 x 104

Repetability less than 10µm. Industry standard 52 centring pins spacing. Surface treated steel body construction. Suitable for use on milling centers towers.



ZK3 - 104 X 104	PRICE	363,00	K - MKB
DIMENSIONI / DIMENSIONS	mm	104x104x27	KIT DI MONTAGGIO DISPONIBILI <i>AVAILABLE MOUNTING KITS</i> Posizionamento di alta precisione grazie ai fori $\varnothing 13h7$ e alle boccole del kit di montaggio MKB. <i>High precision positioning due to the $\varnothing 13h7$ holes and the bushings from the MKB mounting kit.</i>
SISTEMA PUNTO ZERO / ZERO POINT SYSTEM	mm	\square 52	
TASTO PUNTO ZERO / ZERO POINT BOLTS	mm	\varnothing 16	
COPPIA DI SERRAGGIO MASSIMA / MAX TIGHTENING TORQUE	Nm	5	
FORZA DI MANTENIMENTO / HOLDING FORCE	kN	60	
PRECISIONE / ACCURACY	mm	0,01	
MORSA ADATTA / SUITABLEVICE	-	MRC78/MRC48	
KIT DI MONTAGGIO ADATTO / SUITABLE MOUNTNG KIT-		K - MKB	



Punto zero ZKC4 - 195

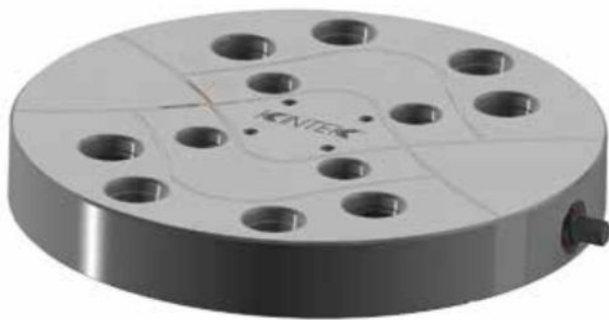
Ripetibilità nel centesimo.

Fori per perni di centratura con interassi 52 e 96. Il corpo è in acciaio e nichelato in superficie.

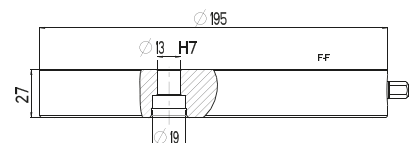
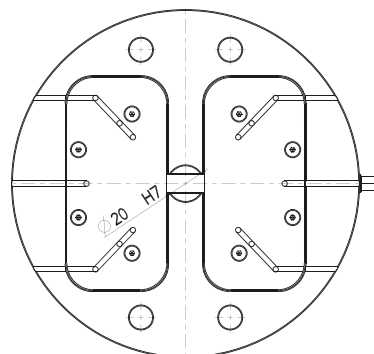
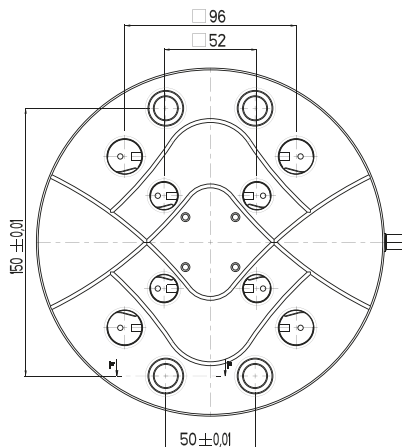
Zero point plates ZKC4 - 195

Repetability less than 10µm. Industry standard 52 and 96 centring pins spacing in one plate.

Surface treated steel body construction.



ZKC4 - 195	PRICE	897,00	K - MKB
DIMENSIONI / DIMENSIONS	mm	195 / 27	KIT DI MONTAGGIO DISPONIBILI AVAILABLE MOUNTING KITS Posizionamento di alta precisione grazie ai fori $\varnothing 13h7$ e alle boccole del kit di montaggio MKB. <i>High precision positioning due to the $\varnothing 13h7$ holes and the bushings from the MKB mounting kit.</i>
SISTEMA PUNTO ZERO / ZERO POINT SYSTEM	mm	\square 96 / 52	
TASTO PUNTO ZERO / ZERO POINT BOLTS	mm	\varnothing 20 / 6	
COPPIA DI SERRAGGIO MASSIMA / MAX TIGHTENING TORQUE	Nm	5	
FORZA DI MANTENIMENTO / HOLDING FORCE	kN	60	
PRECISIONE / ACCURACY	mm	0,01	
MORSA ADATTA / SUITABLEVICE	-	MRC126/MRC78/MRC48	
KIT DI MONTAGGIO ADATTO / SUITABLE MOUNTNG KIT-		K - MKB	



Serie di pinze tipo ER ER collet sets



TYPE	PRICE	NUMERO DI PINZE NUMBER OF COLLETS	CAPACITÀ DI SERRAGGIO CLAMPING CAPACITY
SERIE - ER8	52,00	(1±5) 9 PINZE / COLLETS	Ø 1- 1,5- 2 - 2,5- 3 - 3,5- 4 - 4,5 - 6
SERIE - ER11	62,00	(1±7) 13PINZE / COLLETS	Ø 1- 1,5- 2 - 2,5- 3 - 3,5- 4 - 4,5- 5- 5,5 - 6 - 6,5 - 7
SERIE - ER16	46,00	(1±10) 10 PINZE / COLLETS	Ø 1- 2 - 3 - 4 - 5 - 6 - 7 - 8 - 9 - 10
SERIE - ER20	52,00	(2±13) 12PINZE / COLLETS	Ø 2 - 3 - 4 - 5 - 6 - 7 - 8 - 9 - 10 - 11- 12- 13
SERIE - ER25	68,00	(2±16) 16 PINZE / COLLETS	Ø 2 - 3 - 4 - 5 - 6 - 7 - 8 - 9 - 10 - 11- 12- 13- 14 - 15 - 16
SERIE - ER32	85,00	(3±20) 18PINZE / COLLETS	Ø 3 - 4 - 5 - 6 - 7 - 8 - 9 - 10 - 11- 12- 13- 14 - 15 - 16 - 17 - 18 - 19 - 20
SERIE - ER40	143,00	(4±26) 23 PINZE / COLLETS	Ø 4 - 5 - 6 - 7 - 8 - 9 - 10 - 11- 12- 13- 14 - 15 - 16 - 17 - 18 - 19 - 20 - 21- 22 - 23 - 24 - 25 - 26

RUNOUT ≤ 0,010

Serie di pinze a tenuta meccanica del refrigerante ad alta prssione max 120 Steel sealed collets sets for high pressure max 120bar



DIN6499/ISO 15488

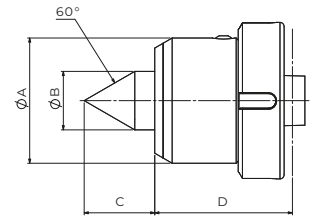
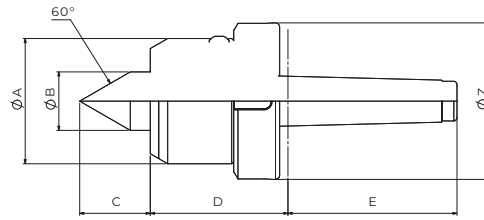
TYPE	PRICE	NUMERO DI PINZE NUMBER OF COLLETS	PROGRESSIONE PROGRESSION
SERIE - ERC20	68,00	5	Ø 4 - 6 - 8 - 10 - 12
SERIE - ERC25	85,00	6	Ø 4 - 6 - 8 - 10 - 12 - 16
SERIE - ERC32	104,00	7	Ø 4 - 6 - 8 - 10 - 12 - 16 - 20

RUNOUT 0,010

Contropunta ad alta precisione con ghiera di estrazione

High precision live center with extraction ring

MWS-60 HP



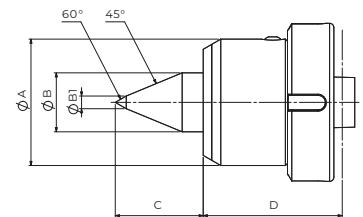
CARATTERISTICHE GENERALI / GENERAL CHARACTERISTICS

INTERFACE	WEIGHT (kg)	LOAD		MAX ROUNDS /	DIMENSIONS (mm)						CODE	PRICE
		AXIAL (N)	RADIAL (N)		ϕA^1	ϕB	C	D	E	Z		
C.M.3	1,1	3040	970	4500	60	28	34	66	81	75	450-00124	335,00
C.M.4	1,9	3730	1730	4000	70	35	43	69,5	102,5	82	450-00143	375,00
C.M.5	3,9	5100	2530	2800	90	40	50	76,5	129,5	105	450-00166	435,00

ECCENTRICITY +/- 5 MICRON

MWS-45 HP

INTERFACE	DIMENSIONS (mm)					CODE	PRICE
	ϕA	ϕB	$\phi B2$	C	D		
C.M.3	60	28	6	41,5	66	450-00125	345,00
C.M.4	70	35	9	51	69,5	450-00144	385,00
C.M.5	90	40	12	56,5	76,5	450-00167	445,00

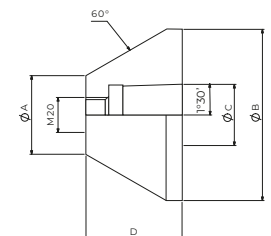


Ricambi e accessori

Spare parts and accessories

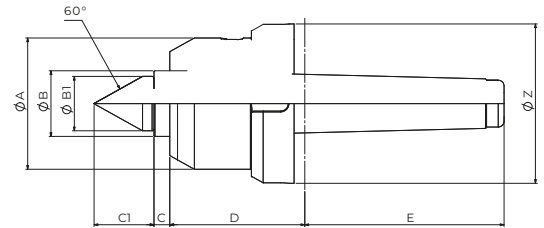
FLANGE PER CONTROPUNTA / LIVE CENTER FLANGES

MODEL	DIMENSIONS (mm)				CODE	PRICE
	ϕA	ϕB	ϕC	D		
MWS/45/98	45	98	35	55	450-00119	194,00
MWS/95/148	95	148	35	55	450-00120	240,00
MWS/145/198	145	198	35	55	450-00121	350,00
MWS/195/248	195	248	35	55	450-00122	380,00
MWS/245/298	245	298	35	55	450-00123	555,00



Contropunta ad alta precisione con ghiera di estrazione e cuspidi intercambiabile MWS-IP MP

High precision live center with extraction ring and interchangeable tip



CARATTERISTICHE GENERALI / GENERAL CHARACTERISTICS

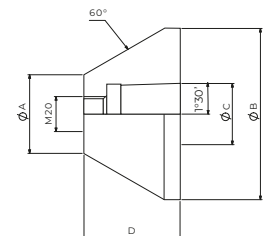
INTERFACE	WEIGHT (kg)	LOAD		MAX ROUNDS /	DIMENSIONS (mm)							CODE	PRICE
		AXIAL (N)	RADIAL (N)		$\varnothing A$	$\varnothing B$	C	C1	D	E	$\varnothing Z$		
C.M.3	1,1	3040	970	4500	60	28	25	7	37	66	81	450-00126	400,00
C.M.4	1,9	3730	1730	4000	70	35	29	8	41	69,5	102,5	450-00145	450,00
C.M.5	3,9	5100	2530	2800	90	40	35	8	46	76,5	129,5	450-00168	500,00

ECCENTRICITY +/-1CENT

Ricambi e accessori *Spare parts and accessories*

FLANGE PER CONTROPUNTA / LIVE CENTER FLANGES

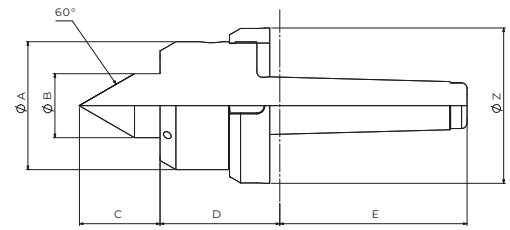
MODEL	DIMENSIONS (mm)				CODE	PRICE
	$\varnothing A$	$\varnothing B$	$\varnothing C$	D		
MWS/45/98	45	98	35	55	450-00119	194,00
MWS/95/148	95	148	35	55	450-00120	240,00
MWS/145/198	145	198	35	55	450-00121	350,00
MWS/195/248	195	248	35	55	450-00122	380,00
MWS/245/298	245	298	35	55	450-00123	555,00



Contropunta con ghiera di estrazione per carichi pesanti

MWS/CP

Live center with extraction ring for heavy loads



CARATTERISTICHE GENERALI / GENERAL CHARACTERISTICS

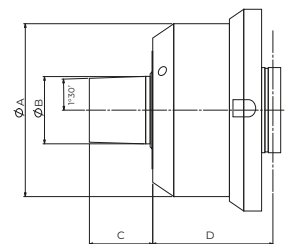
INTERFACE	WEIGHT (kg)	LOAD		MAX ROUNDS /	DIMENSIONS (mm)						CODE	PRICE
		AXIAL (N)	RADIAL (N)		ϕA^1	ϕB	C	D	E	ϕZ		
C.M.3	1,9	3040	2350	4000	60	28	38	51	92	75	450-00129	440,00
C.M.4	1,9	3730	3450	4000	70	35	46	54	115	82	450-00151	450,00
C.M.5	3,9	6370	4010	2800	90	40	53	65	136	105	450-00172	500,00
C.M.6	9,1	10290	13960	2400	130	65	71	92,5	195	160	450-00191	1200,00

ECCENTRICITY +/-1CENT

MWS/C-F

INTERFACE	DIMENSIONS (mm)				CODE	PRICE
	ϕA	ϕB	C	D		
C.M.4	70	35	40	54	450-0154	480,00
C.M.5	90	35	40	65	450-0177	525,00
C.M.6	130	35	40	92,5	450-0192	1270,00

ON REQUEST UP TO M100 WITH SCALED LOADS

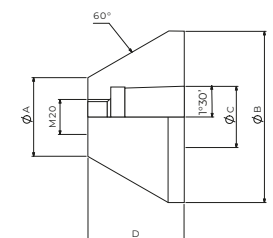


Ricambi e accessori

Spare parts and accessories

FLANGE PER CONTROPUNTA / LIVE CENTER FLANGES

MODEL	DIMENSIONS (mm)				CODE	PRICE
	ϕA	ϕB	ϕC	D		
MWS/45/98	45	98	35	55	450-00119	194,00
MWS/95/148	95	148	35	55	450-00120	240,00
MWS/145/198	145	198	35	55	450-00121	350,00
MWS/195/248	195	248	35	55	450-00122	380,00
MWS/245/298	245	298	35	55	450-00123	555,00





**TECNOVOA
TOOLS, S.L.**

SUMINISTROS DE MECANIZADO

**C/ Galileo Galilei, 200
P.I. Porceyo - 33211
Gijón (Asturias)
T. 984 29 17 61
info@tecnovoatools.com
www.tecnovoatools.com**